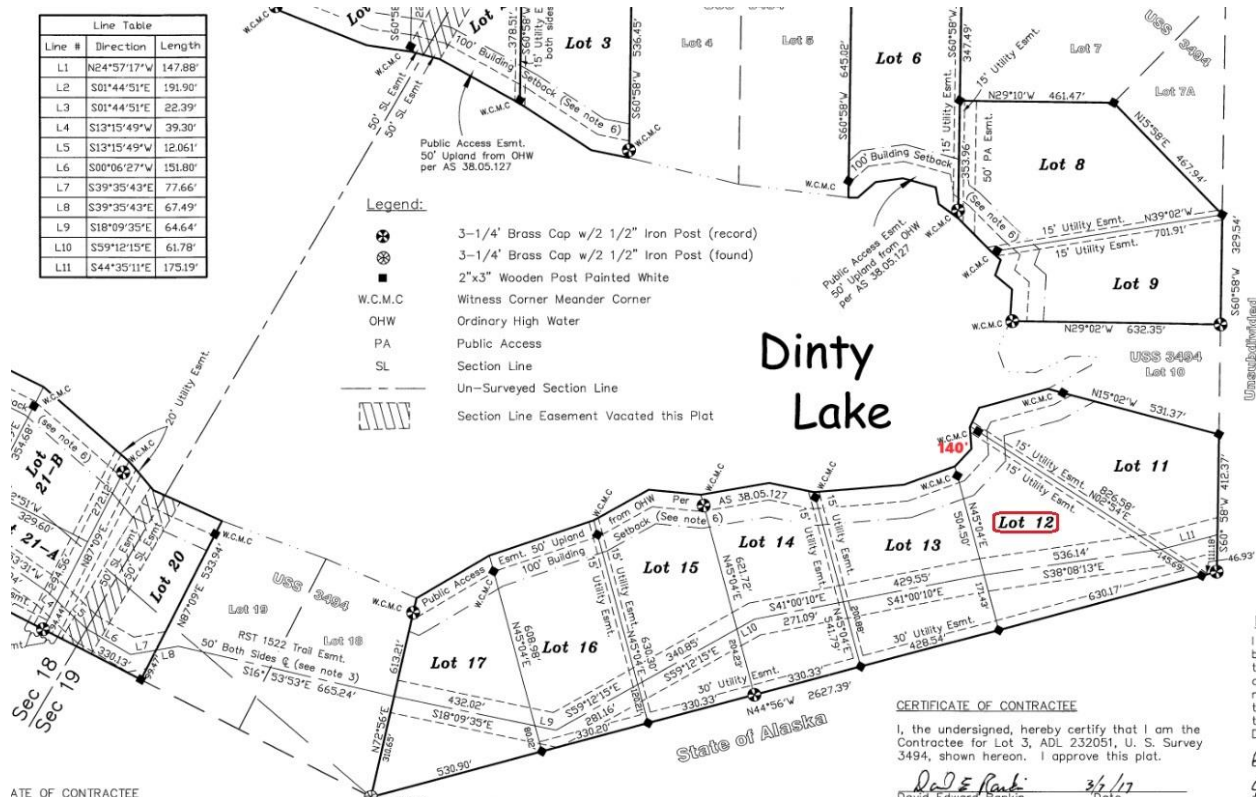


Line #	Direction	Length
L1	N24°57'17"W	147.88'
L2	S01°44'51"E	191.90'
L3	S01°44'51"E	22.39'
L4	S13°15'49"W	39.30'
L5	S13°15'49"W	12.061'
L6	S00°06'27"W	151.80'
L7	S39°35'43"E	77.66'
L8	S39°35'43"E	67.49'
L9	S18°09'35"E	64.64'
L10	S59°12'15"E	61.78'
L11	S44°35'11"E	175.19'



- Legend:**
- 3-1/4" Brass Cap w/2 1/2" Iron Post (record)
  - 3-1/4" Brass Cap w/2 1/2" Iron Post (found)
  - 2"x3" Wooden Post Painted White
  - W.C.M.C. Witness Corner Meander Corner
  - OHW Ordinary High Water
  - PA Public Access
  - SL Section Line
  - Un-Surveyed Section Line
  - Section Line Easement Vacated this Plot

**CERTIFICATE OF CONTRACTEE**

I, the undersigned, hereby certify that I am the Contractee for Lot 3, ADL 232051, U. S. Survey 3494, shown hereon. I approve this plat.

Unsubdivided

**CERTIFICATE OF CONTRACTEE**

**CERTIFICATE OF CONTRACTEE**

I, the undersigned, hereby certify that I am the Contractee for Lot 3, ADL 232051, U. S. Survey 3494, shown hereon. I approve this plat.

*David Edward Rankin* 3/2/17  
 Date  
 David Edward Rankin  
 4025 Balchen Drive  
 Anchorage, AK 99517

