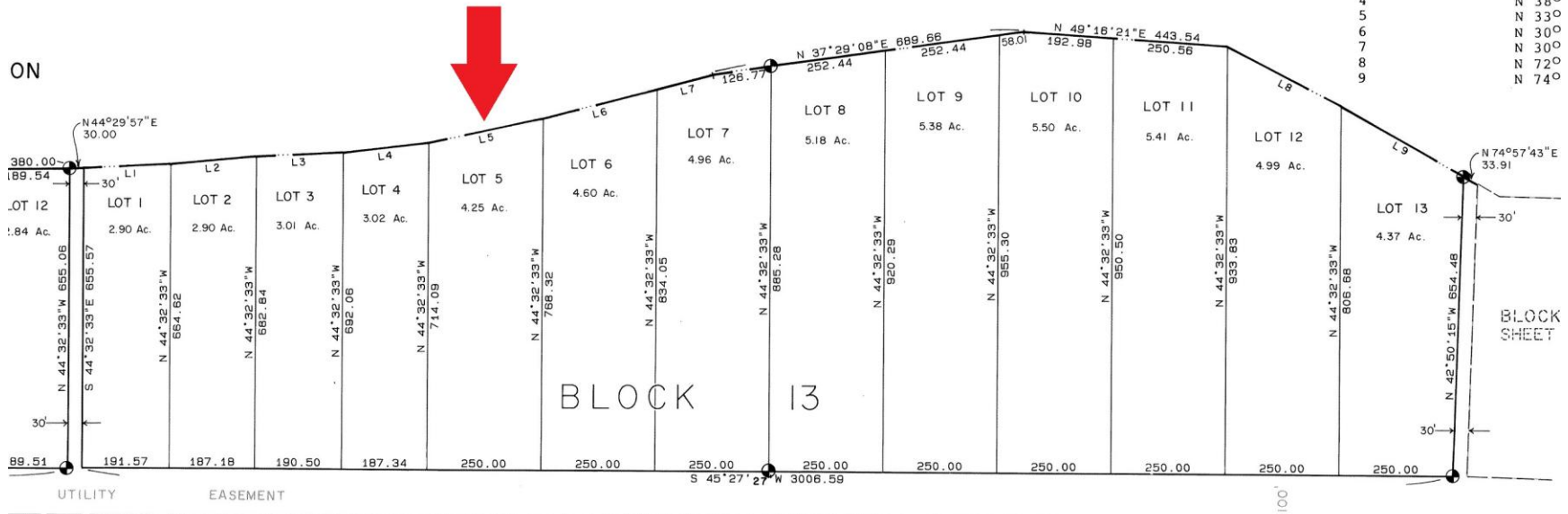


PORTAGE BAY

MEANDERS FOR
BLOC

ON

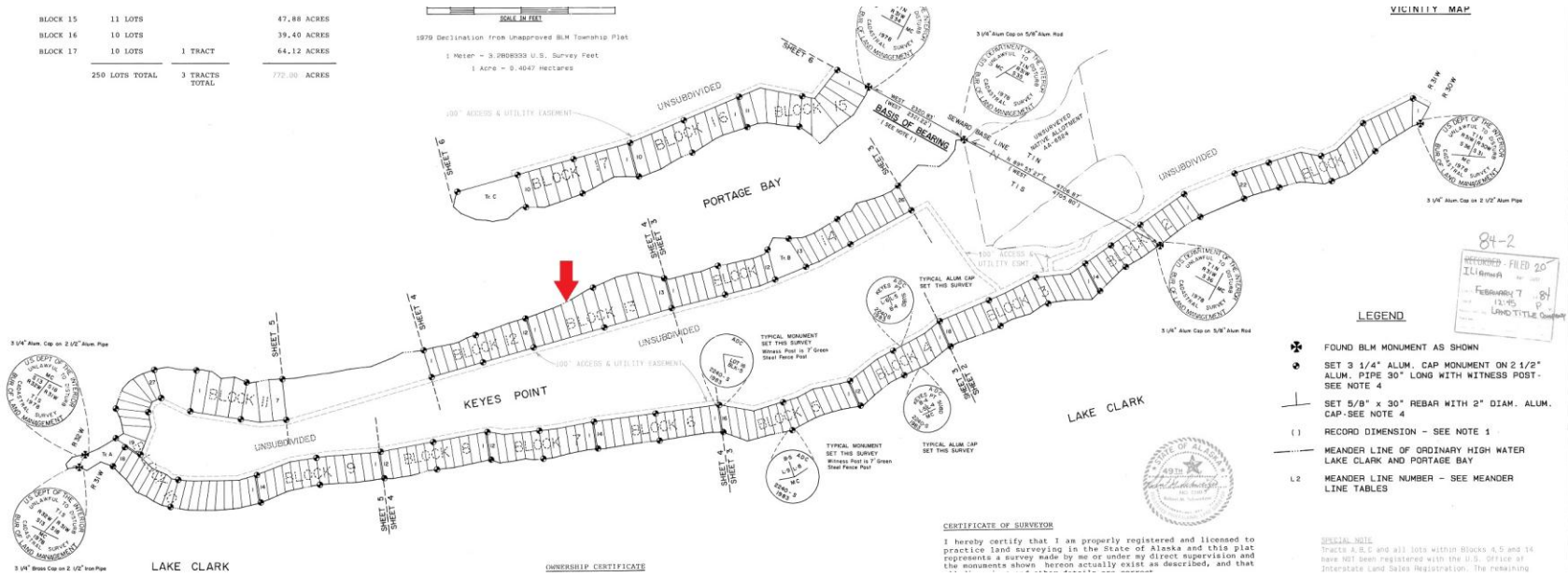


BLOCK SHEET



BLOCK 15	11 LOTS	47.88 ACRES
BLOCK 16	10 LOTS	39.40 ACRES
BLOCK 17	10 LOTS	64.12 ACRES
250 LOTS TOTAL	3 TRACTS TOTAL	772.00 ACRES

SCALE IN FEET
 1979 Declination from Unapproved BLM Township Plat
 1 Meter = 3.280833 U.S. Survey Feet
 1 Acre = 0.4047 Hectares



- LEGEND**
- ✱ FOUND BLM MONUMENT AS SHOWN
 - ⊙ SET 3 1/4" ALUM. CAP MONUMENT ON 2 1/2" ALUM. PIPE 30" LONG WITH WITNESS POST. SEE NOTE 4
 - ⊥ SET 5/8" x 30" REBAR WITH 2" DIAM. ALUM. CAP-SEE NOTE 4
 - () RECORD DIMENSION - SEE NOTE 1
 - MEANDER LINE OF ORDINARY HIGH WATER LAKE CLARK AND PORTAGE BAY
 - L2 MEANDER LINE NUMBER - SEE MEANDER LINE TABLES

CERTIFICATE OF SURVEYOR
 I hereby certify that I am properly registered and licensed to practice land surveying in the State of Alaska and this plat represents a survey made by me or under my direct supervision and the monuments shown hereon actually exist as described, and that

SPECIAL NOTE
 Tracts A, B, C and all lots within Blocks A, 5 and 16 have not been registered with the U.S. Office of Interstate Land Sales Registration. The remaining

84-2
 RECORDED FILED 20
 ILLINOIS
 FEBRUARY 7 1984
 LAND TITLE COMPANY

