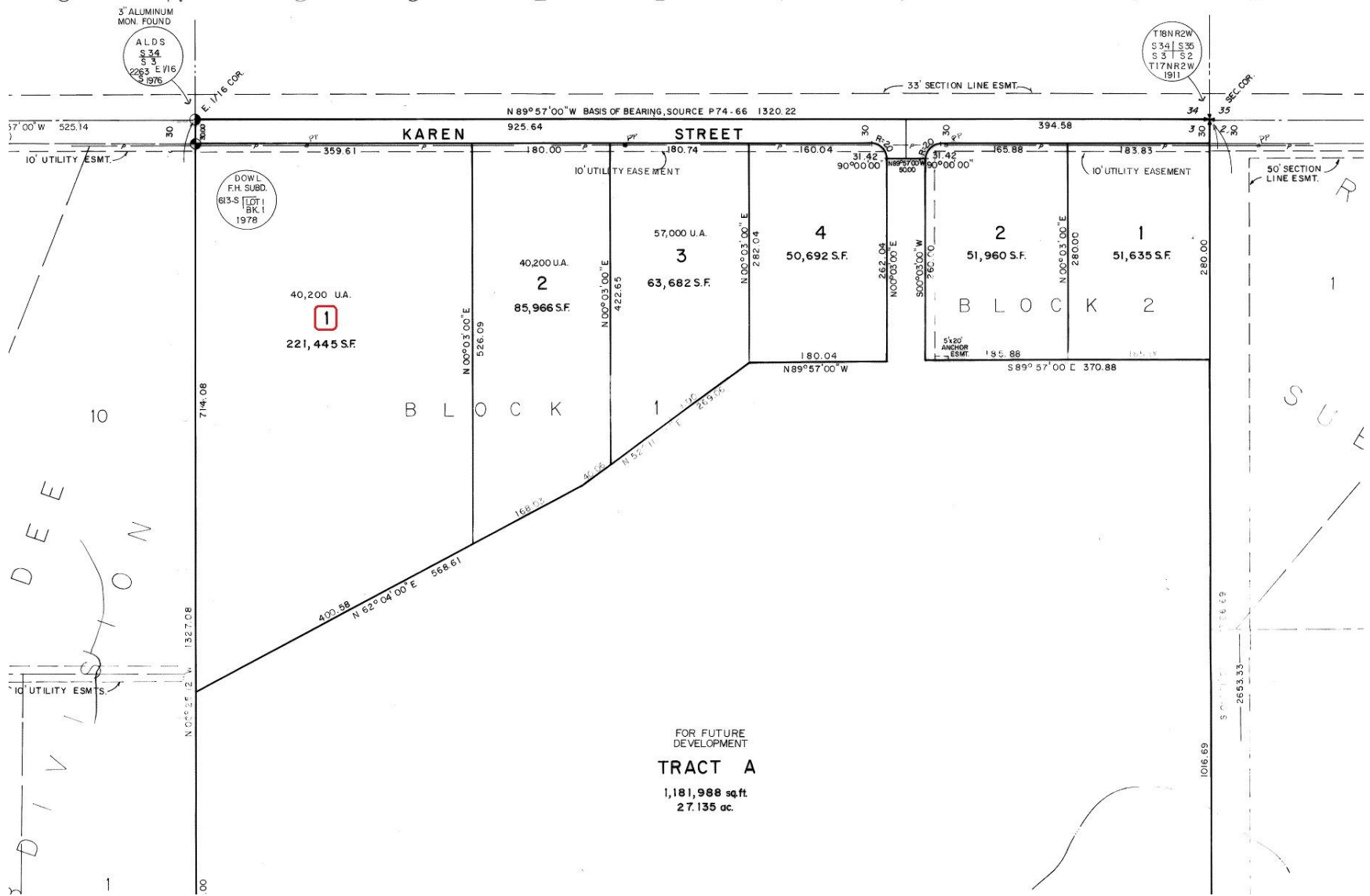


U N S U B D I V I D E



3" ALUMINUM MON. FOUND
A.L.D.S.
S 34
S 3
2263 E 7/16
S 1976

T18NR2W
S 34 | S 36
S 3 | S 2
T17NR2W
1911

DOWL.
F.H. SUBD.
613-S LOT 1
BK. 1
1978

40,200 U.A.
1
221,445 S.F.

40,200 U.A.
2
85,966 S.F.

57,000 U.A.
3
63,682 S.F.

57,000 U.A.
4
50,692 S.F.

2
51,960 S.F.

1
51,635 S.F.

B L O C K 2

FOR FUTURE
DEVELOPMENT
TRACT A
1,181,988 sq.ft.
27.135 ac.

D E E
S T O N
D I V I S I O N

S U E

