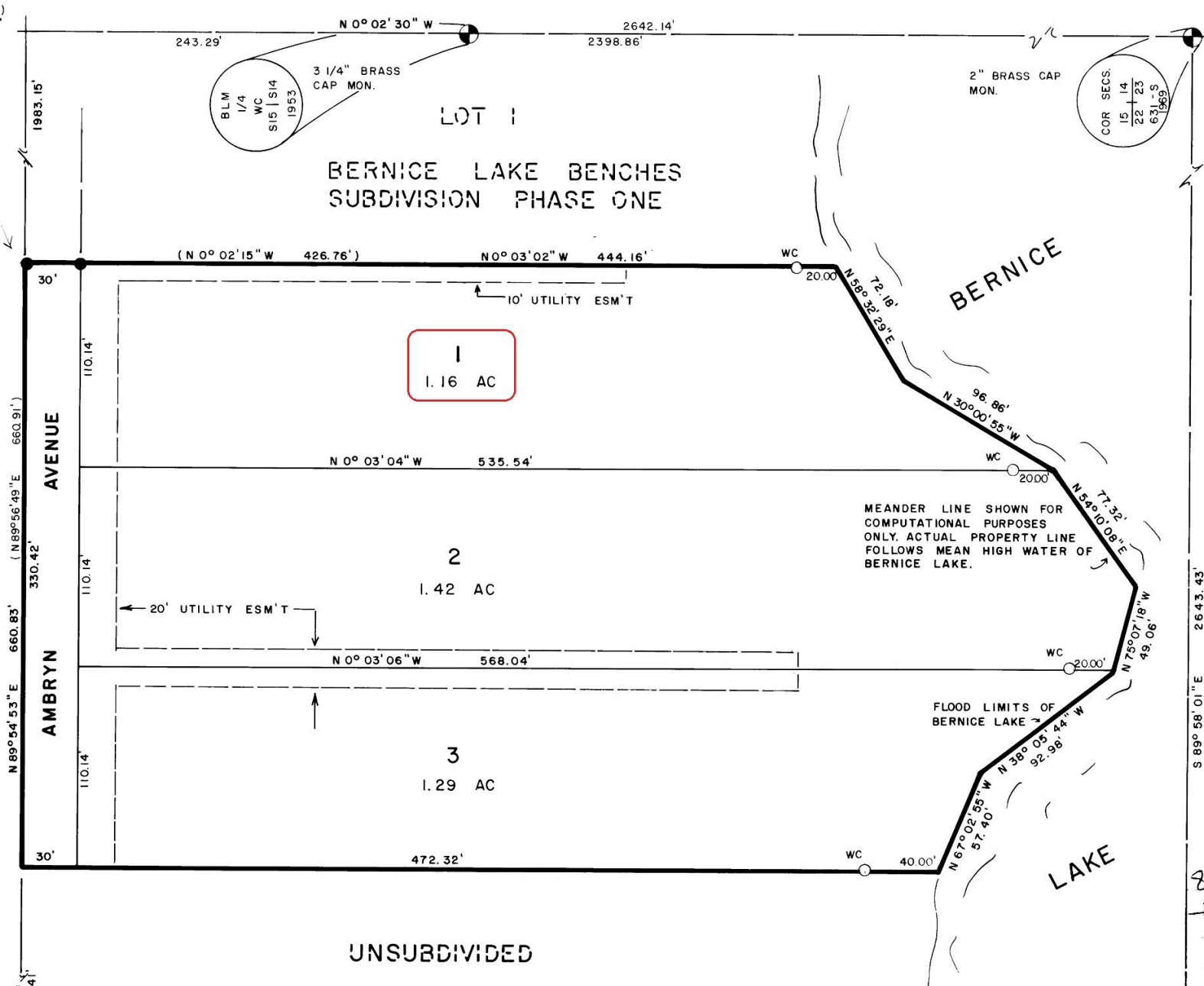


7/8" RBR (BENT)
DEED WITH 5/8"
1" 2" ALUM. CAP
DEED CWE 1/64
1/2"

UNSUBDIVIDED
SUBD. BLK 1



243.29' N 0° 02' 30" W 2642.14' 2398.86'

1983.15'

BLM 1/4 WC S15 | S14 1953
3 1/4" BRASS CAP MON.

2" BRASS CAP MON.

COR SECS.
15 14
22 23
63 69

(N 0° 02' 15" W 426.76') N 0° 03' 02" W 444.16'

30' WC 20.00'

110.14' 10' UTILITY ESM'T

N 59° 32' 29" E 72.18'

BERNICE

96.86' WC 20.00'

N 30° 00' 55" W

77.32' WC 20.00'

N 54° 10' 08" E

MEANDER LINE SHOWN FOR COMPUTATIONAL PURPOSES ONLY. ACTUAL PROPERTY LINE FOLLOWS MEAN HIGH WATER OF BERNICE LAKE.

20' UTILITY ESM'T

N 0° 03' 04" W 535.54'

N 0° 03' 06" W 568.04'

330.42' WC 20.00'

110.14' 20' UTILITY ESM'T

N 78° 07' 18" W 49.06'

FLOOD LIMITS OF BERNICE LAKE

N 89° 54' 53" E 660.83' (N 89° 56' 49" E 660.91')

AMBRYN AVENUE

30' WC 40.00'

110.14' N 67° 02' 55" W 57.40'

N 38° 05' 44" W 92.98'

472.32' UNSUBDIVIDED

S 89° 58' 01" E 2643.43'





