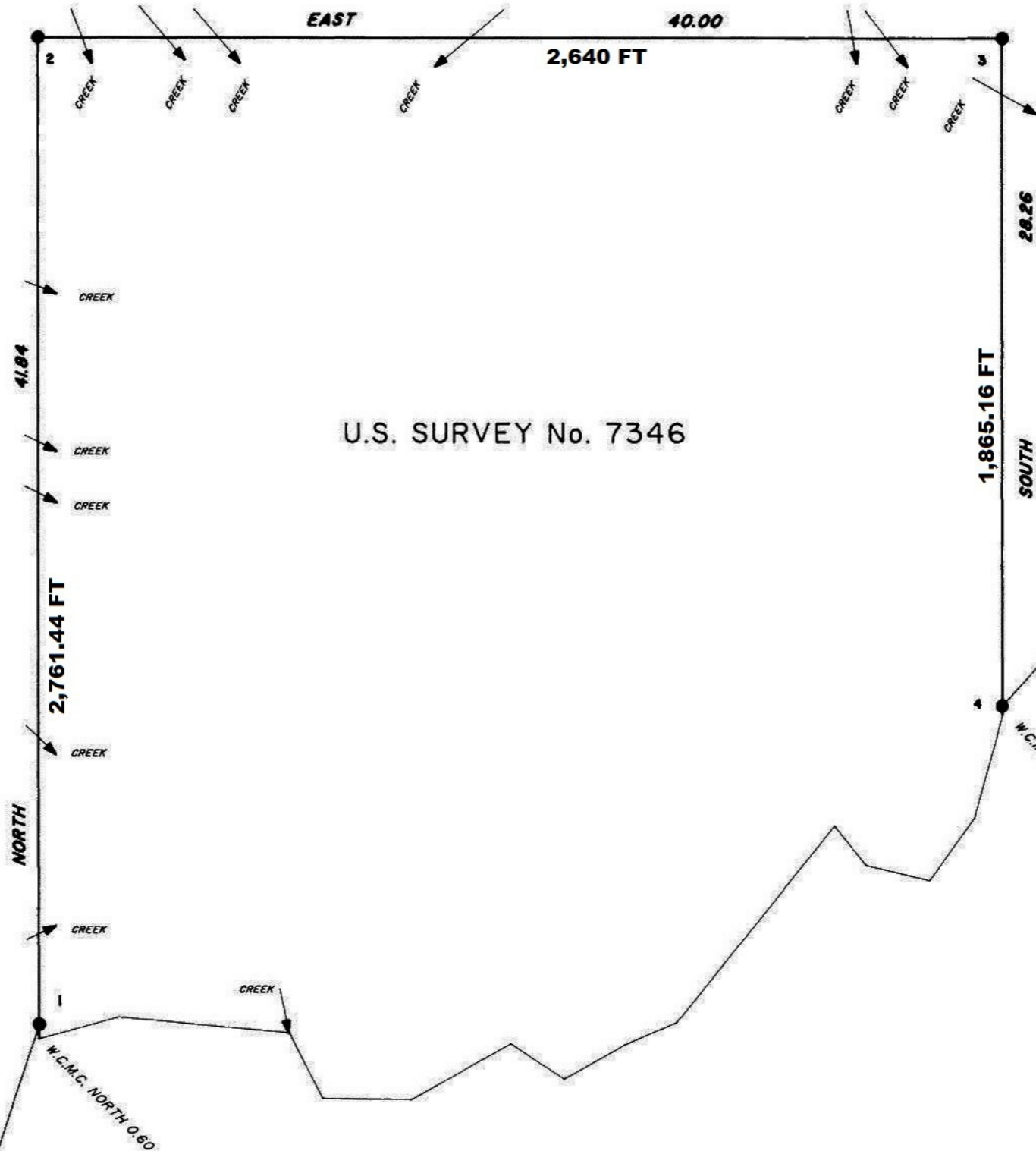




Mean  
Magnetic  
Declination  
23° E.

W.C.M.C.  
SECS. 31 AND 36  
T. 4 S., RS. 27 AND 28 W.



U.S. SURVEY No. 7346

LONESOME BAY  
ILIAMNA LAKE

W.C.M.C. 4  
LOT 4  
U.S. SURVEY  
No. 8200

S. 78° 51' W.  
19.41

N. 42° 20' E.  
17.92

W.C.M.C. NORTH 0-35

W.C.M.C. NORTH 0-60

NORTH

SOUTH

EAST

40.00

2,640 FT

1,865.16 FT

41.94

2,761.44 FT

28.26

2

3

1

4

CREEK

CREEK

CREEK

CREEK

CREEK

CREEK

CREEK

CREEK

CREEK

CREEK

CREEK

CREEK

CREEK