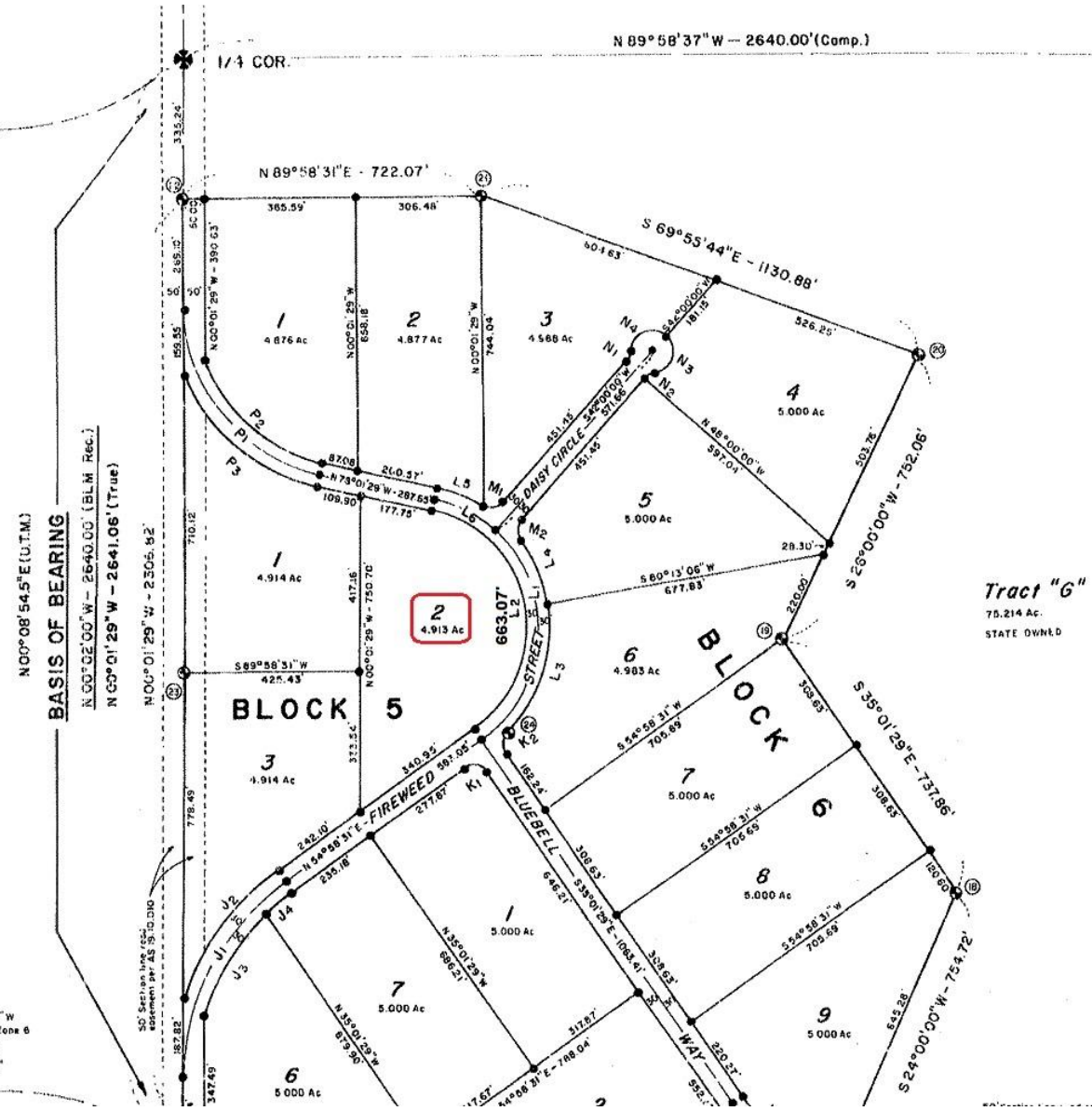


Lot 61°23'36.981"N Long. 147°11'49.512"W
 Alaska State Plane Zone 3 U.T.M. Coordinates Zone 6
 X = 290,196.233' E = 489,485.800'
 Y = 2,703,259.634' N = 6,806,442.930'
 Δ = -01°03'02.541" Cont. = 0.999801 SF = 0.99960155
 SF = 0.999801 SF = 0.99960155

U.G.A.

Lot 61°23'10.078"N Long. 147°11'46.569"W
 Alaska State Plane Zone 3 U.T.M. Coordinates Zone 6
 X = 290,148.953' E = 489,483.715'
 Y = 2,700,619.392' N = 6,805,638.230'
 Δ = -01°03'02.300" Cont. = -00°10'22.031" SF = 0.9998801 SF = 0.99960155



N 89°58'37"W - 2640.00' (Comp.)

1/4 COR.

N 89°58'31"E - 722.07'

S 69°55'44"E - 1130.88'

305.59' 306.48'

4.876 Ac 4.877 Ac 4.586 Ac

4.914 Ac 4.913 Ac

4.914 Ac

4.914 Ac

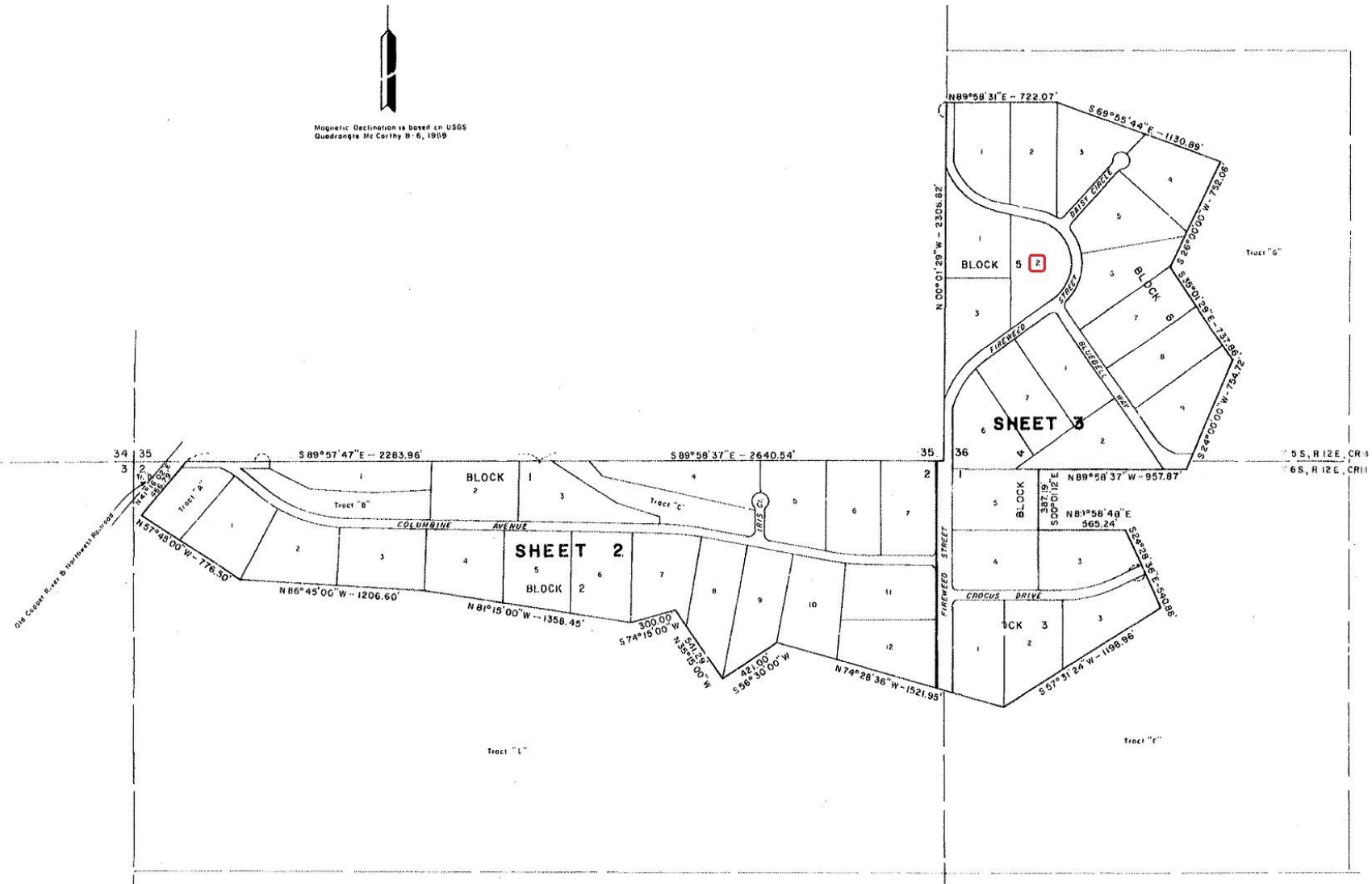
5.000 Ac 5.000 Ac 5.000 Ac

5.000 Ac 5.000 Ac 5.000 Ac

Tract "G"
75.214 Ac.
STATE OWNED



Magnetic Declination is based on USGS
Quadrangle Mc Corby N-6, 1959



Old Cassin River & Highway Right-of-Way

Tract "L"

Tract "G"

Tract "G"

5 S, R 12 E, CR 1
6 S, R 12 E, CR 1

SHEET 2

SHEET 3

BLOCK 5
BLOCK 6
BLOCK 7

BLOCK 1
BLOCK 2
BLOCK 3

Tract "A"
Tract "B"
Tract "C"

N 89° 58' 31" E - 722.07'
S 69° 55' 44" E - 1130.69'
S 26° 00' 00" W - 758.08'
S 35° 01' 29" E - 133.86'
S 22° 00' 00" W - 754.12'
N 89° 58' 31" E - 957.87'
N 81° 58' 48" E - 565.24'
S 54° 26' 36" E - 340.86'
S 57° 31' 24" W - 1199.96'
N 74° 28' 36" W - 1521.95'
S 56° 30' 00" W
421.00'
N 34° 00' 00" W
300.00'
574° 15' 00" W
N 81° 15' 00" W - 1358.45'
N 86° 45' 00" W - 1206.60'
N 57° 43' 00" W - 776.50'
S 89° 57' 47" E - 2283.96'
S 89° 58' 31" E - 2640.54'
N 00° 01' 28" W - 2306.82'

34 35

35 36

3 2 1

3 2 1

3 2 1

3 2 1

3 2 1

3 2 1

3 2 1

3 2 1

3 2 1

3 2 1

3 2 1

3 2 1

3 2 1

3 2 1

3 2 1

3 2 1

3 2 1

3 2 1

3 2 1

3 2 1

3 2 1

3 2 1

3 2 1

3 2 1

3 2 1

3 2 1

3 2 1

3 2 1

3 2 1

3 2 1

3 2 1

3 2 1

3 2 1

3 2 1

3 2 1

3 2 1

3 2 1

