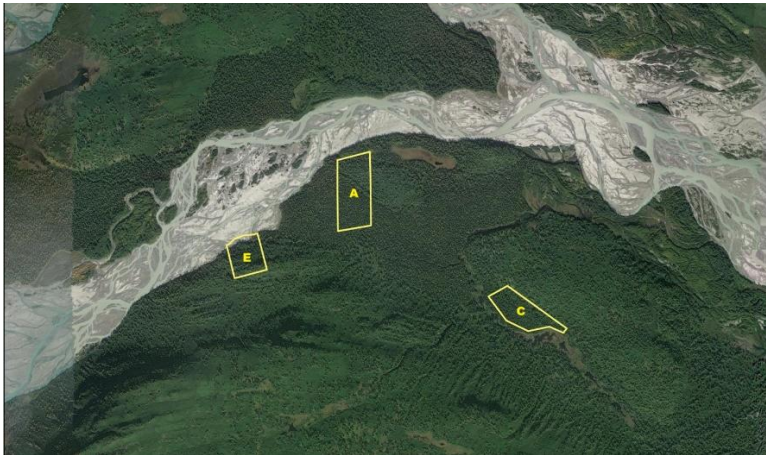


---

## Land at Hayes River

***File #I015***



<b>Land Size:</b>	Tract A = 38.30 Ac \$25,000 (SOLD) Tract C = 25.71 Ac \$18,500 Tract E = 19.97 Ac \$20,000 (SOLD)
<b>Area:</b>	Mat-Su Remote (Hayes River)
<b>Legal Description:</b>	Tract C of ASLS #90-321; Anchorage Recording District; Plat #90-27. Tract E Friday Creek RRCS (ASLS #2003-11); Anchorage Recording District; Plat #2005-87
<b>Directions:</b>	Located near the south bank of Hayes River near confluence with Skwentna River.
<b>Access:</b>	Snowmachine in winter. Boat in summer.
<b>Waterfront:</b>	None; no wetlands noted.
<b>Utilities:</b>	None
<b>Covenants:</b>	None; Unrestricted.
<b>Buildings:</b>	None
<b>Surveyed:</b>	Yes; corners were originally marked with monuments and noted on plats.
<b>Taxes:</b>	Approx. \$32.86 yr
<b>Terms:</b>	Cash
<b>Remarks:</b>	

**DISCLAIMER:** Statewide Real Estate LLC does not guarantee the completeness, or the accuracy of the material furnished in this brochure. Potential buyers are strongly advised to seek professional help in determining the availability, quality and cost of water, sewageable soils, and utilities. A survey may be necessary to locate property corners; GPS coordinates are approximate. Potential buyers should independently verify the zoning requirements and permits required with the appropriate agencies to determine if the property is suitable for their intended use.