

NITS,
TION

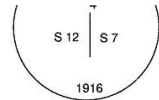
RIVER

66' PUBLIC ACCESS EASEMENT
PLAT No. 2015-20 DATED 2/26/15

REMAINDER TRACT B
11.29 ACRES MORE OR LESS
PLAT No. 2015-147 DATED 10/08/15
SUBJECT TO DEVELOPMENT RIGHTS
CREATING LOTS AND COMMON ELEMENTS

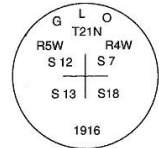
66' SECTION LINE EASEMENT VACATED
PLAT No. 2015-20 DATED 2/26/15

**THE POINT AT TWO RIVERS CONDOMINIUM
ADDITION No. 1**
PLAT No. 2015-147 DATED 10/8/15



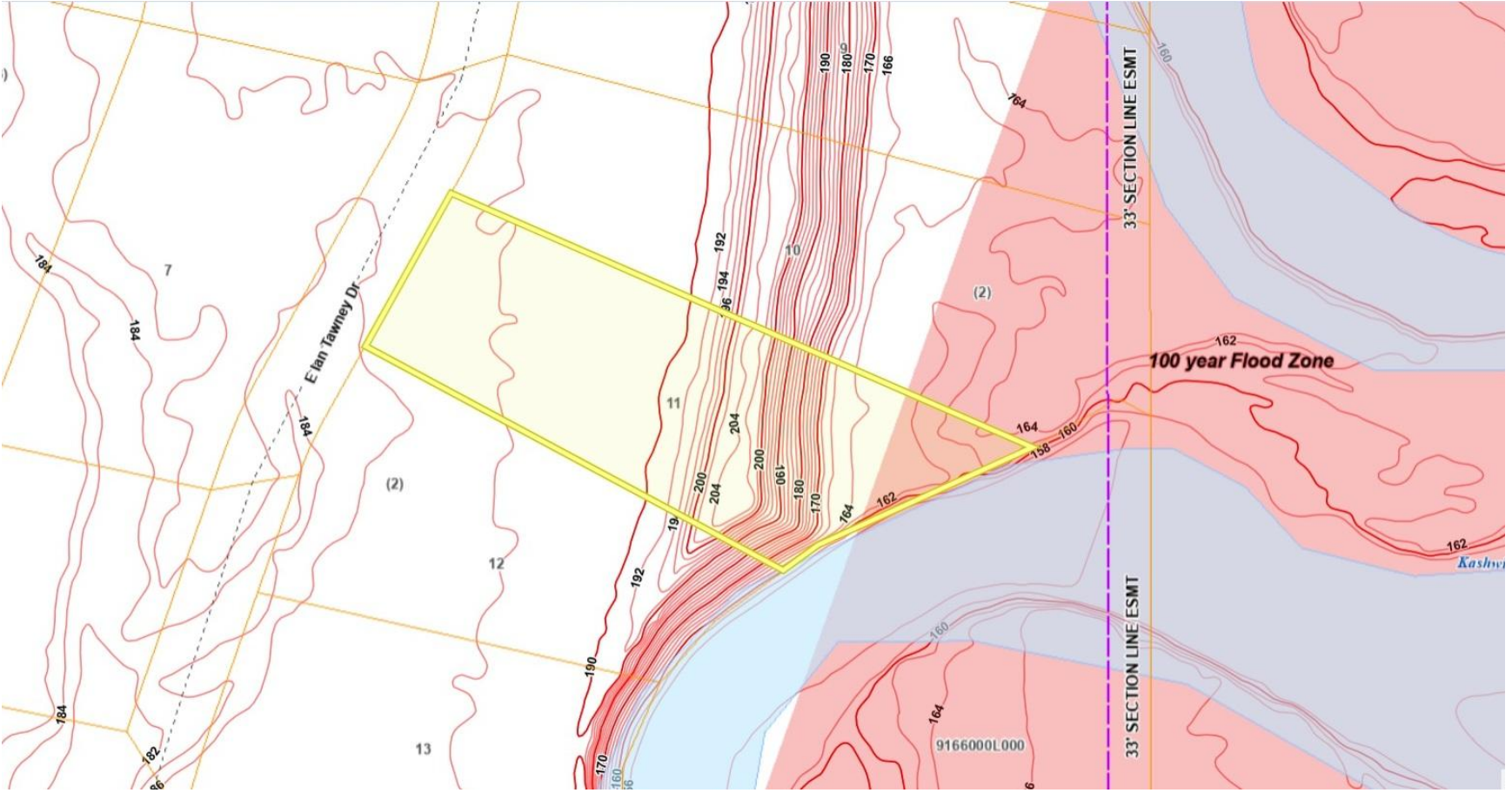
33' SECTION LINE EASEMENT
33' SECTION LINE EASEMENT
N 0°00'00"E 2639.53'
BASIS OF BEARING
RECORD GLO TOWNSHIP PLAT
DATED JUNE 16, 1916

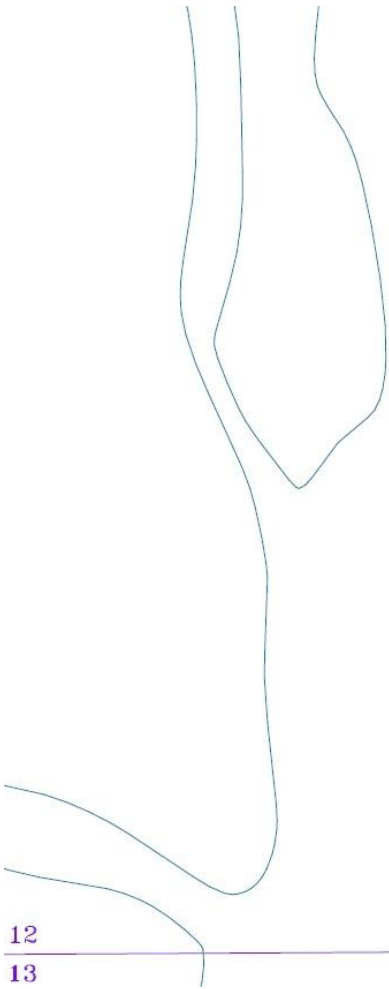
FOUND 2 1/2" BC MON.
UP 0.8" GOOD CONDITION



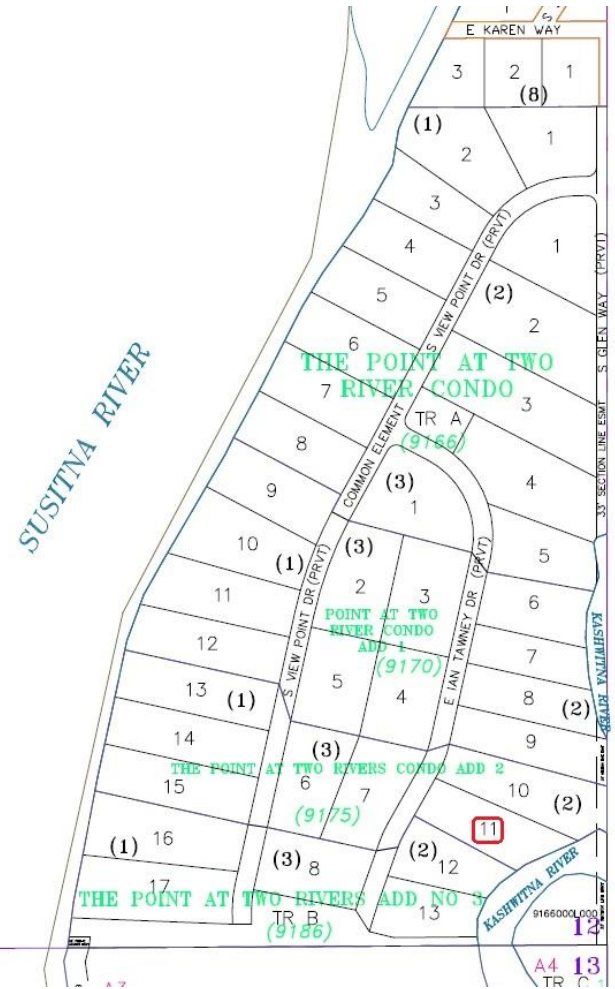
CURVE DATA

LINE TABLE





12
13



A4 13
TR C

