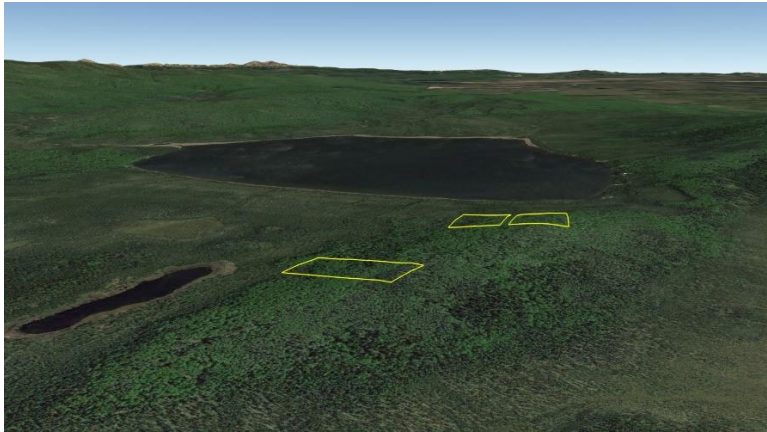


---

## Lots overlooking Deadman Lake

***File #C259***



<b>Land Size:</b>	Lot 2 Block 8 = 4.968 Acres Lot 6 Block 8 = 4.831 Acres Lot 23 Block 9 = 4.471 Acres
<b>Price:</b>	\$15,000 each
<b>Area:</b>	Central Interior (near Tanana River & Manley Hot Springs).
<b>Legal Description:</b>	Lots 2 & 6 Block 8 and Lot 23 Block 9 Deadman Lake Subd.; ASLS #81-40; Manley Hot Springs Recording District; Plat #81-6
<b>Directions:</b>	Deadman Lake is located approx. 22 miles SE of Manley Hot Springs; see maps.
<b>Access:</b>	Float plane; or snowmachine
<b>Waterfront:</b>	None; lots overlook Deadman Lake
<b>Utilities:</b>	None
<b>Covenants:</b>	Yes; no restrictions noted.
<b>Buildings:</b>	None
<b>Surveyed:</b>	Yes; corners were marked with 5/8" x 36" rebar w/2" aluminum caps.
<b>Taxes:</b>	None
<b>Terms:</b>	Cash; or Owner will finance sale with a minimum of 30% down payment.
<b>Remarks:</b>	

**DISCLAIMER:** Statewide Real Estate LLC does not guarantee the completeness or the accuracy of the material furnished in this brochure. Potential buyers are strongly advised to seek professional help in determining the availability, quality and cost of water, sewageable soils, and utilities. A survey may be necessary to locate property corners; GPS coordinates are approximate. Potential buyers should independently verify the zoning requirements and permits required with the appropriate agencies to determine if the property is suitable for their intended use.