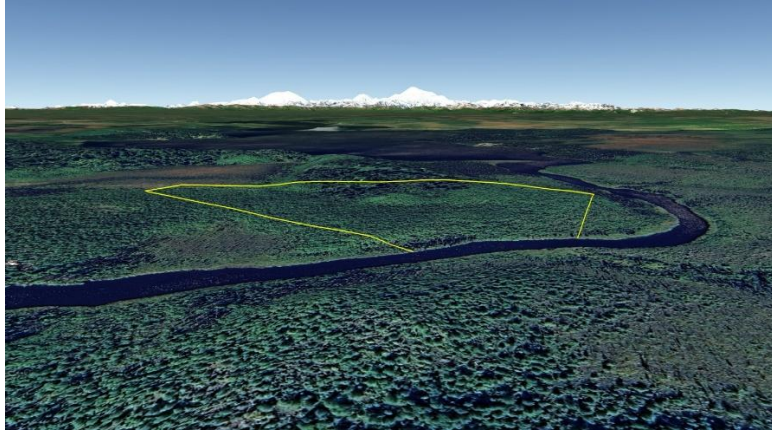

24.63 Acres on Trapper Creek

File #B265



Land Size:	24.63 Acres
Price:	\$33,750
Area:	Mat-Su North Central (Trapper Lake)
Legal Description:	Tract F of South Shore Trapper Lake; Talkeetna Recording District; Plat #87-35
Directions:	Located near south shore of Trapper Lake on Trapper Creek.
Access:	Float plane; or snowmachine.
Waterfront:	Frontage on Trapper Creek; wetlands noted.
Utilities:	None
Covenants:	None; unrestricted.
Buildings:	None
Surveyed:	Yes; the corners were originally marked with aluminum capped monuments.
Taxes:	Approx \$70.85 yr
Terms:	Cash; or New Financing
Remarks:	

DISCLAIMER: Statewide Real Estate LLC does not guarantee the completeness or the accuracy of the material furnished in this brochure. Potential buyers are strongly advised to seek professional help in determining the availability, quality and cost of water, sewageable soils, and utilities. A survey may be necessary to locate property corners; GPS coordinates are approximate. Potential buyers should independently verify the zoning requirements and permits required with the appropriate agencies to determine if the property is suitable for their intended use.