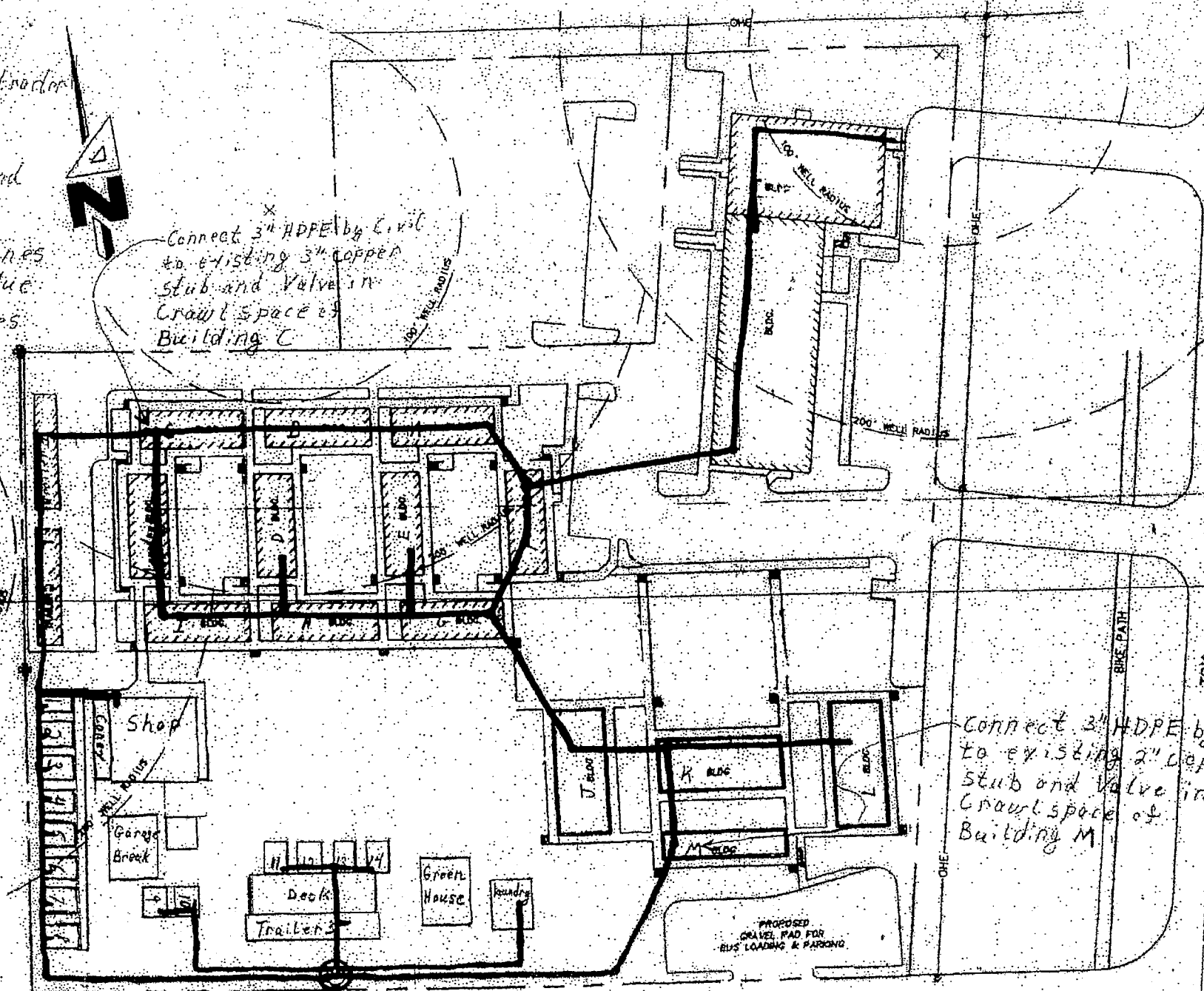


Plumbing Contractor
 Complete tie-ins at Building C and Building M
 Construct lines shown in blue
 Fire-m. Services affected buildings



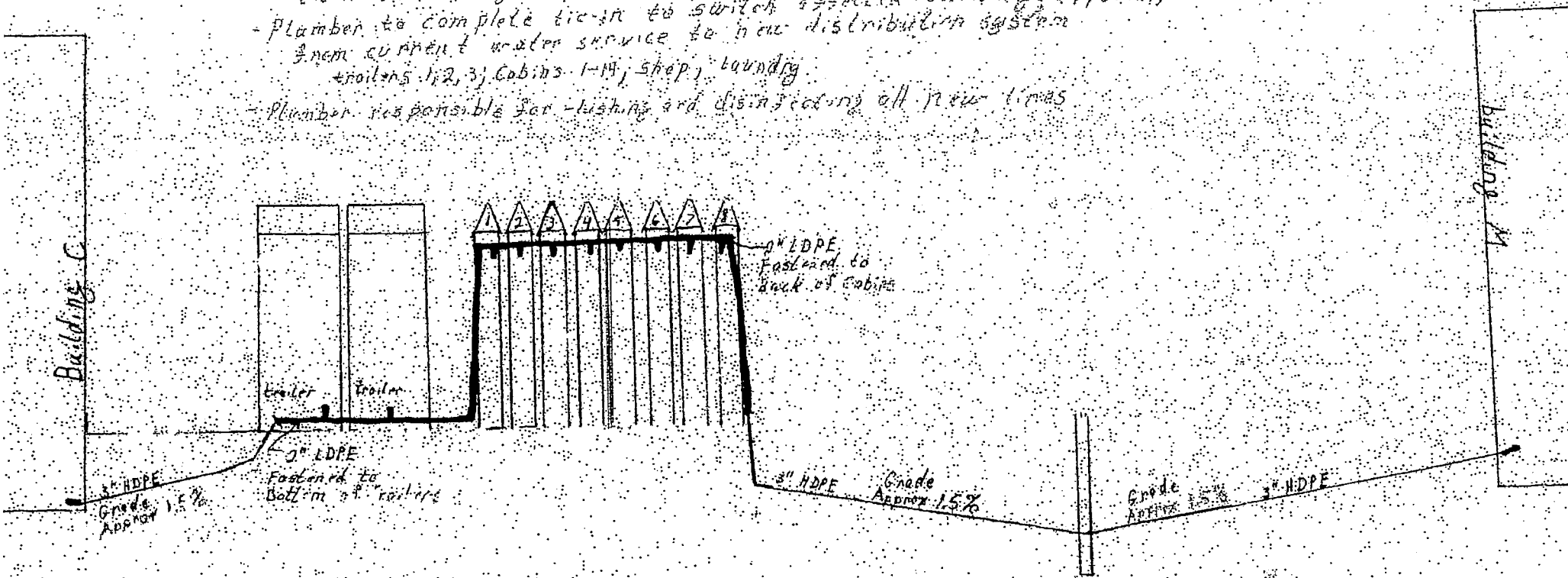
Connect 3" HDPE by Civil to existing 3" copper stub and Valve in Crawl Space of Building C

Connect 3" HDPE by Civil to existing 2" copper stub and Valve in Crawl space of Building M

Scale 1"=50'

Plumbing Plan

- Plumber to complete tie-ins in crawlspace of Building C and Building M
- Plumber to provide and install above-ground LDPE and complete tie-in to HDPE by Civil Contractor.
- Plumber to complete tie-in to switch affected buildings (19 total) from current water service to new distribution system trailers 1, 2, 3; Cabins 1-14; shop, laundry
- Plumber responsible for flushing and disinfecting all new lines



Plumbing Profile

Plumbing Profile