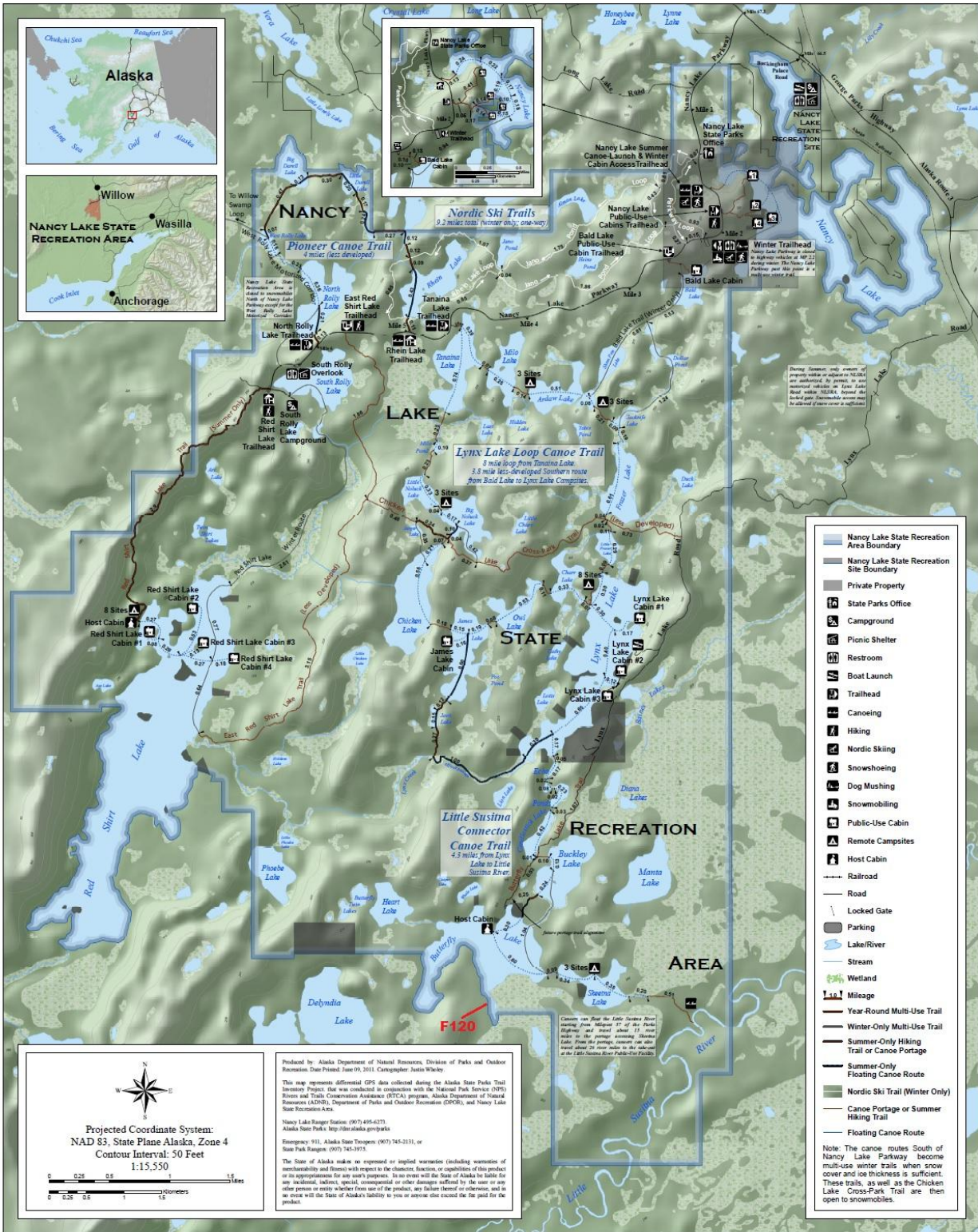
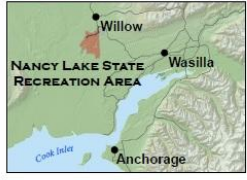

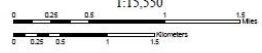




# NANCY LAKE STATE RECREATION AREA



- Nancy Lake State Recreation Area Boundary
  - Nancy Lake State Recreation Site Boundary
  - Private Property
  - State Parks Office
  - Campground
  - Picnic Shelter
  - Restroom
  - Boat Launch
  - Trailhead
  - Canoeing
  - Hiking
  - Nordic Skiing
  - Snowshoeing
  - Dog Mushing
  - Snowmobiling
  - Public-Use Cabin
  - Remote Campsites
  - Host Cabin
  - Railroad
  - Road
  - Locked Gate
  - Parking
  - Lake/River
  - Stream
  - Wetland
  - Mileage
  - Year-Round Multi-Use Trail
  - Winter-Only Multi-Use Trail
  - Summer-Only Hiking Trail or Canoe Portage
  - Summer-Only Floating Canoe Route
  - Nordic Ski Trail (Winter Only)
  - Canoe Portage or Summer Hiking Trail
  - Floating Canoe Route
- Note: The canoe routes South of Nancy Lake Parkway become multi-use winter trails when snow cover and ice thickness is sufficient. These trails, as well as the Chicken Lake Cross-Park Trail are then open to snowmobiles.

  
 Projected Coordinate System:  
 NAD 83, State Plane Alaska, Zone 4  
 Contour Interval: 50 Feet  
 1:15,550  


Produced by Alaska Department of Natural Resources, Division of Parks and Outdoor Recreation Data Project, June 09, 2011. Cartographer: Justin Whiskey.

This map represents differential GPS data collected during the Alaska State Parks Trail Inventory Project that was conducted in conjunction with the National Park Service (NPS) Rivers and Trails Conservation Assistance (RTCA) program, Alaska Department of Natural Resources (ADNR), Department of Parks and Outdoor Recreation (DPOR), and Nancy Lake State Recreation Area.

Nancy Lake Ranger Station: (907) 485-6273  
 Alaska State Parks: <http://alaska.gnparks.com>  
 Emergency 911, Alaska State Troopers: (907) 745-2131, or  
 State Park Rangers: (907) 745-3978.

The State of Alaska makes no expressed or implied warranties (including warranties of merchantability and fitness) with respect to the character, function, or capabilities of this product or its appropriateness for any user's purposes. In no event will the State of Alaska be liable for any incidental, indirect, special, consequential or other damages suffered by the user or any other person or entity who relies on the product, any failure thereof or otherwise, and we accept with the State of Alaska's liability to you or anyone else except the fee paid for the product.